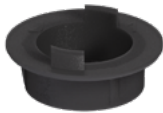


Self-drilling screw JT4-LT-XT-3H/6-5.5x25



Cross references

LT-XT Tool TX25

Application range

- > For fastening plain aluminium composite panels to aluminium substructures of 2 mm
- > Only to be used in combination with XT fixed and sliding point grommets

Properties

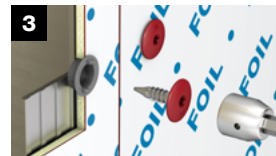
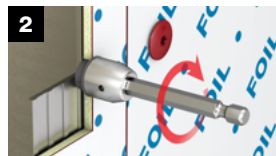
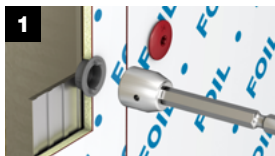
- > A2 stainless steel
- > Pan head

Advantages

- > To cover slotted holes and large pre-drill diameters
- > Also available as painted version
- > Flat screw head for aesthetic facade design
- > Easy assembly and reliable sliding thanks to optimised free spin zone
- > Regulated by the building authorities in test certificate P-S 18 0447
- > Easy removal of protective film
- > Centering grommet collar protects the facade cladding surface from scratches
- > No rivet installation gauge or drilling gauge necessary
- > Non-threaded part under the screw head allows an intentional further rotation of the screw head after connecting surface

Note

Please note the respective approval of the exterior wall cladding and the assembly instructions of the manufacturer.

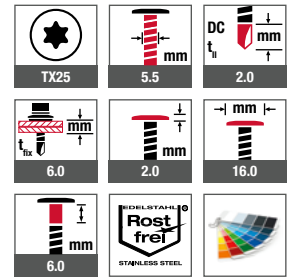


Installation of the XT system: 1. Insert XT centring grommet into pre-punched facade panel; 2. Rotate XT centring grommet with LT-XT-Tool in order to cut the protective film; 3. Fasten LT-XT screw with LT-XT-Tool in support profile; 4. Remove protective film gently over the fixing point

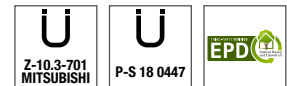
Applications



Technical specifications



Certifications



Product online



Order description	Length [mm]	max. panel thickness [mm]	PU [pieces]	Price/100 [EUR]	Article number	EAN
Self-drilling screw						
JT4-LT-XT-3H/6-5.5x25 KD16	25	4.0	500		7384216300	4061245073132

Order description	Internal hole diameter [mm]	Pre-drilling diameter [mm]	max. panel thickness [mm]	PU [pieces]	Price/100 [EUR]	Article number	EAN
Centring grommets							
EJOT XT-centring grommet Ø 11/4 F	5.8	11.0	4.0	500		3010013700	4061245044552
EJOT XT-centring grommet Ø 11/4 S	8.4	11.0	4.0	500		3010014700	4061245044545