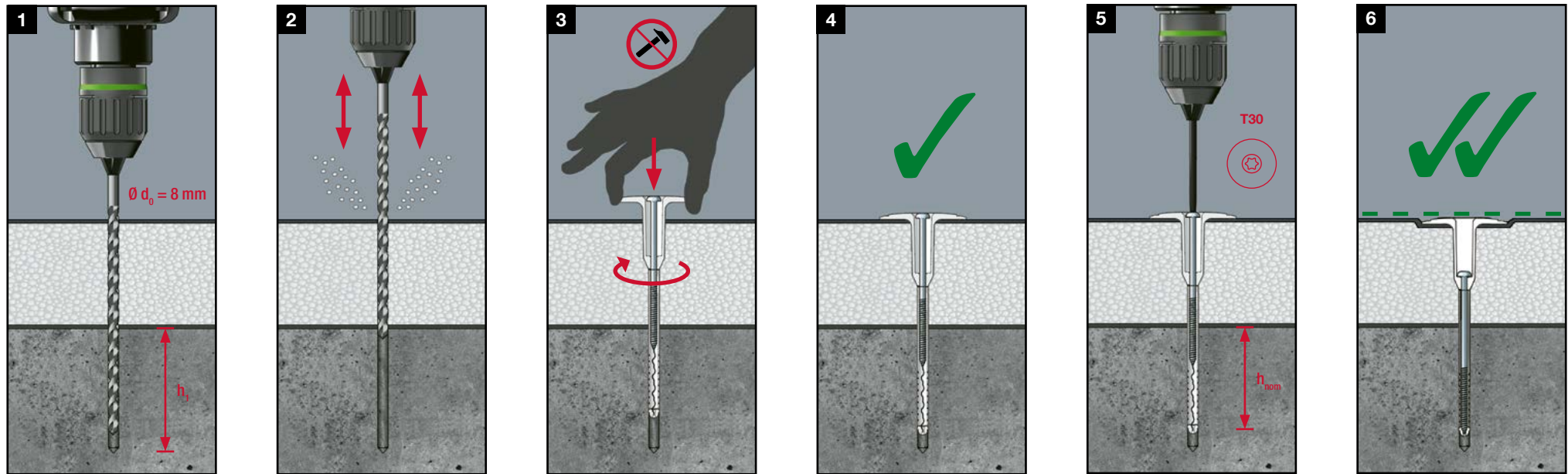


## Montageanleitung EJOT® Flachdachdübel FDD Plus 50 / FDD Plus 50 S

User manual EJOT® Flat Roofing Anchor FDD Plus 50 / FDD Plus 50 S



### Bohrlochtiefe / Drill hole depth $h_1$

Beton / Concrete $\geq$ C12/15	$\geq$ 45 mm
Leichtbeton / Lightweight concrete $\geq$ LC12/13	$\geq$ 45 mm
Porenbeton / Aerated concrete $\geq$ P 3.3	$\geq$ 80 mm

### Effektive Verankerungstiefe / Effective installation depth $h_{nom}$

Beton / Concrete $\geq$ C12/15	$\geq$ 30 mm
Leichtbeton / Lightweight concrete $\geq$ LC12/13	$\geq$ 30 mm
Porenbeton / Aerated concrete $\geq$ P 3.3	$\geq$ 65 mm